



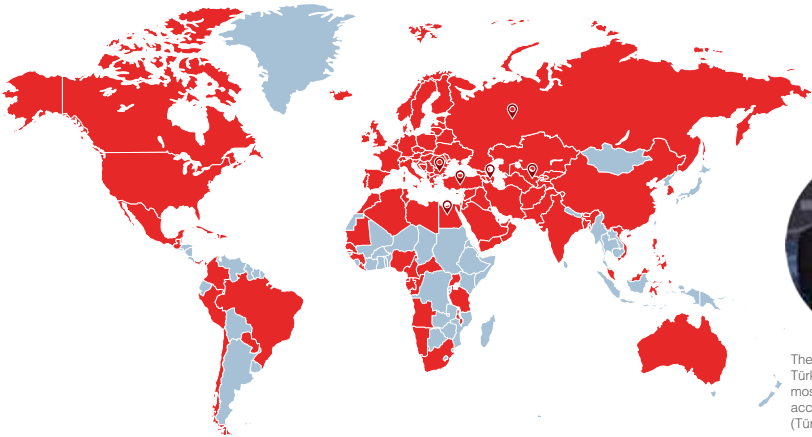
EKİN ENDÜSTRİYEL

Myra Drum and Container  
Pumps Operation and Service  
User Manual





Your Satisfaction Is Our Priority;  
Globalization Is Our Goal!



The second-rated company in  
Türkiye has exported to the  
most different countries in 2021,  
according to ISIB  
(Türkiye HVAC-R).



## **The first condition of innovation is to question. Sustainable innovation is to never stop questioning.**

For us, the journey of innovation started with a question: “Why not produce value-added technology in Türkiye?”. The first turning point in this long journey was the birth of the MIT (Made In Türkiye) brand. The founding vision of MIT, which enabled us to become Türkiye’s first domestic manufacturer in the field of “Plate Heat Exchanger”, was not to be a domestic “alternative”, but to create a quality brand that could compete in the global market.

By working for this goal, we have been entitled to receive many international quality certificates such as ISO, TSE, CE, GOST... for our products and processes over many years. For us, questioning the current situation was a natural result of our desire to exceed ourselves.

## **New Generation Engineering**

With our engineering approach that focuses on the process, not the problem, we do not only specialise in one product, but also consider the entire ecosystem of that product. Therefore, we provide an end-to-end application by producing all other components that will form a system as well as the plate heat exchanger. For this, we focus on the continuous development of the necessary engineer staff. With our business development, pre-sales, sales and after-sales services provided by our expert engineers, we produce not only products but also “solutions”.

At the point we have reached; we offer complementary services with our internationally approved plate heat exchangers, components such as accumulation tanks, boilers, industrial pumps and installation materials that turn these heat exchangers into a system. With our team of more than 100 expert engineers, we continue to develop as a solution partner for projects requiring high technology in more than 60 countries.



## HEAT TRANSFER PRODUCTS

- Gasketed Plate Heat Exchangers
- Brazed Heat Exchangers
- Shell & Tube Heat Exchangers
- Evaporators and Condensers
- DC Fan Driven Oil Coolers
- Heat Coils
- Serpentine / Radiators / Economizers

## PRESSURE VESSELS

- Water Heater Tanks
- Water Storage Tanks
- Buffer Tanks
- Expansion Tanks / Automatic Pump Controlled Expansion System
- Stainless Steel Tanks
- Balance Tanks / Dirt Separators / Air Separators / Air Tubes
- Steam Separators
- Pressured Air Tanks
- Neutralization Units

## INDUSTRIAL AND FOOD GRADE SYSTEMS

- Heat Stations
- Industrial Process Systems
- Dosing Systems
- Substations
- Thermoregulators
- Pasteurizers
- CIP and Hygienic Process Systems
- Hygienic Storage and Process Tanks / Reactors
- Homogenizers
- Turn-key Projects

## FLUID TRANSFER PRODUCTS

- Lobe Pumps
- Hygienic Centrifugal Pumps
- Twin Screw Pumps
- Gear Pumps
- Magnetic Drive Pumps / Thermoplastic Pumps
- Dosing Pumps
- Air Operated Double Diaphragm Pumps (AODD)
- Drum Pumps
- Monopumps
- Peristaltic (Hose) Pumps
- Centrifugal Blowers
- Roots Blowers
- Turbo Blowers

## FLOW CONTROL UNITS

- Butterfly Valves
- Ball Valves
- Globe Valves
- Knife Gate Valves
- Actuators
- Check Valves and Strainers
- Pneumatic Piston Valves

## ENERGY SYSTEMS

- Domestic and Industrial Boilers
- Steam Generators
- Chillers
- Cooling Towers

# PRODUCT RANGE



# Contents

General Information .....	1
Operating Instructions .....	1
Suggested Installation .....	2
Common Applications .....	3
Model Number Key .....	4
Example.....	4
Motor Model Number Key .....	5
Pump Series .....	5
Polypropylene Series .....	5
316 Stainless Steel Series .....	7
PPVDF Series .....	8
High Viscosity Screw Pump Series .....	10
Motor Series .....	11
Electric Motor Series .....	11
Air Motor Series .....	13
Optional Equipment .....	16
Troubleshooting .....	17
Dimension Drawing .....	18
General Terms Of Use and Important Warnings .....	19



## General Information



Read and understand operation and service guide before commissioning.

### General Information

1. Check chemical chart to match the suitable material of the pump to the liquid you wish to pump. When selecting a pump, please take into account of criteria such as capacity, head, temperature, viscosity, liquid, solid size and chemical resistance before ordering.
2. Check power, voltage, fitting conditions, electrical connections and working conditions before commissioning.
3. 1"(25mm) discharge size is standard hose barb. 3/4" (22mm) and 1 1/4"(31.75mm) size are special size.

### Upon Receiving

1. Please check if pump model on the name plate corresponds to your order.
2. Check motor and pump for any damages upon receiving.
3. Make sure motor and pump has been fully installed and all connections and pipes have been connected.

## Operating Instructions

1. Set the switch "OFF" position before installation of motor and pump.
2. Make sure hand wheel and all connections are securely fastened.
3. Wear on eyes and hearing protection before operating.
4. Make sure air supply line clean.
5. Do not store pump in a humid and corrosive environment.
6. Do not use combustible gases to drive this motor.
7. Handle motor and pump with care.
8. Make sure the voltage is connected according to correct electrical specification.
9. Do not run the air motor at high speeds with no load. This will result in excessive internal heat that cause air motor damage.
10. Install pressure regulator or simple shut-off valve to regulate the air motor's speed and torque, and turn on from low to high until request.
11. Install air filter, regulator for V-A series air line that closed air motor.
12. The maximum particle size must not exceed 3 mm. Please install strainer for size over 3mm.
13. Turn on the air or power only after pump and pipes are in place.
14. Always start the air from low to high to extend the life time of the pump.
15. Motor is equipped with overload protection switch to allow dry running.

16. Do not leave pump unattended during operation.
17. With viscosity fluid up to 800 CPS and up to 1200 CBS, please use the high pressure model. Use high viscosity screw pump or air operated double-diaphragm pump for transferring high viscosity fluids.
18. If strange noise occurs, please turn off the motor first and check the troubleshooting in operating book.
19. For safety, please properly bond and ground when handling solvent or flammable fluids.
20. Make sure pump and motor is properly and securely fastened, or otherwise, could result in serious damage to the couplings.
21. Never submerge motor in liquid or splash motor with liquid.

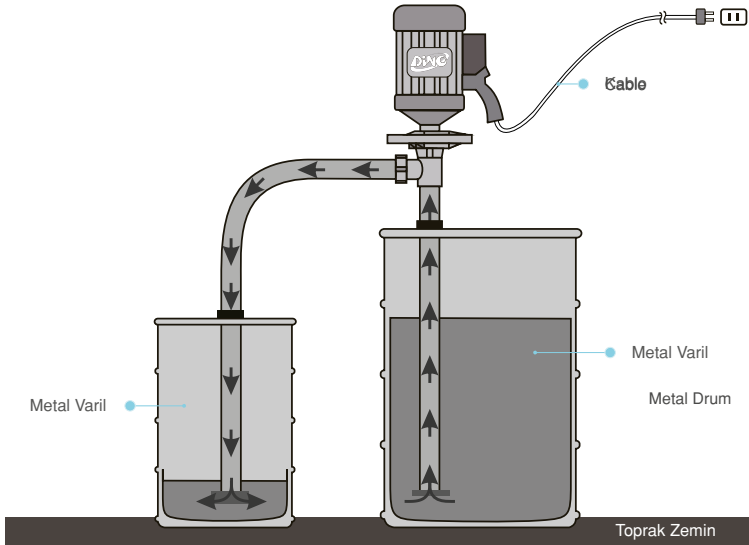
## Suggested Installation



For safety, please properly bond and ground when handling solvent or flammable fluids as a static electric discharge could result in fire, explosion, injury or death. Do not start the pump in case of any doubt, and contact with Ekin Endüstriyel.

**Motor:** Variable Speed Control Motor

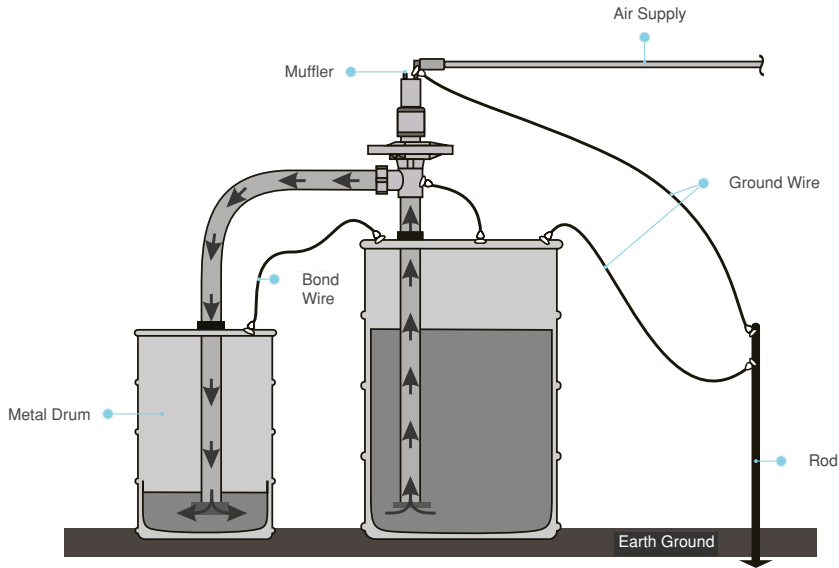
**Pump Tube:** V-PP



Do not pump corrosive, flammable or explosive liquids.

**Motor:** Air Motor

**Pump Tube:** V-SS



For pumping corrosive, flammable or explosive liquids.

## Common Applications

### Ekin Endüstriyel Served

Automotive industry, chemical industry, electronic industry, food, beverages, waste water treatment, semi-conductor, refineries, pharmaceutical industry, agriculture, cosmetics, construction industry, pulp / paper industry, mining, ship industry, textile industry, paint and coating, plating, LCD industry.

### Applications

Container Type	Model	Length
5GAL Bottles	V-Material 700	700 mm (27")
55GAL Drums (200 lt)	V-Material 1000	1000 mm (39")
Barrels & Tanks	V-Material 1200	1200 mm (47")
IBC's	V-Material 1500	1500 mm (60")
Large Storage Vessels	V-Material 1800	1800mm (72")



## Common Applications

Material	Max. Temp	Common Applications
PPHT (Polypropylene)	80 °C / 175 °F	<ul style="list-style-type: none"> <li>• Acetic Acid</li> <li>• Sulfuric Acid</li> <li>• Hydrochloric - 20%</li> <li>• Nitric Acid - 20%</li> <li>• Alkalies</li> <li>• Ferric Chloride</li> </ul>
PVDF	100 °C / 212 °F	<ul style="list-style-type: none"> <li>• Concentrated Nitric Acid</li> <li>• Sulfuric Acid-66 Baume</li> <li>• Sodium Hypochlorite</li> <li>• Propionic Acid</li> <li>• Stearic Acid</li> <li>• Hydrofluoric Acid</li> </ul>
SS	100 °C / 212 °F	<ul style="list-style-type: none"> <li>• Alcohol</li> <li>• Gasoline</li> <li>• Aqueous Ammonia</li> <li>• Isopropyl Ether</li> <li>• Solvents</li> <li>• Petroleum Products</li> </ul>



For safety, please properly bond and ground when handling solvent or flammable fluids.

## Model Number Key

### Example

V100 - SS (High volume /Material :SS316)

V100-SS-HP (High volume /Material :SS316)

V100 - SS- HV(High volume /Material :SS316)

<b>V</b>	-	<b>SS</b>	<b>1000</b>	-	<b>HV</b>
Dino Pumps		Material	Length		Model
		-SS	-700: 700 mm (27")		-HV: High Viscosity
		-PP	-1000: 1000 mm (39")		-HP: High Pressure
		-PVDF	-1200:1200 mm (47")		
		-AL	-1500:1500 mm (60")		
			-1800:1800 mm (72")		



## Motor Model Number Key

<b>V</b> └ Dino Pumps	-	<b>E</b> └ <u>Model</u> E: Electric Motor 450 W	<b>1-V</b> └ <u>Voltage</u> 1-V: 1 Ø 110V 2-V: 1 Ø 220V	<b>US</b> └ <u>Plug</u> -US: ☐ -UK: ☐ -EU: ○○
<b>V</b> └ Dino Pumps	-	<b>H</b> └ <u>Model</u> H: Air Motor	<b>1</b> └ <u>Horsepower</u> 1. 420 W 2. 560 W	



Contact Ekin Endüstriyel in case of any doubt. **444 35 46 (EKİN)**

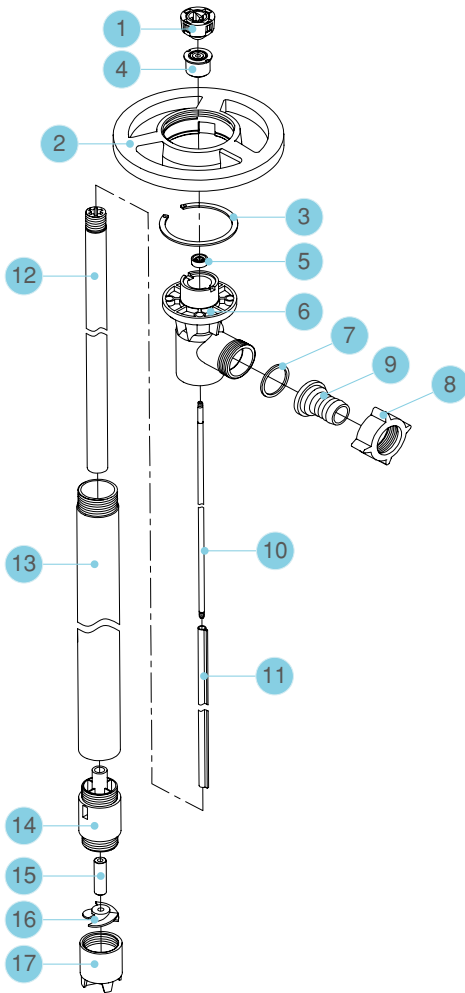
## Pump Series

### Polypropylene Series

#### V - PP Pump Series

Model	Length	Material	Shaft	Impeller
V70-PP	700 mm (27")	Polypropylene	Hastelloy	High Volume
V100-PP	1000 mm (39")			
V120-PP	1200 mm (47")			
V150- PP	1500 mm (60")			
V180-PP	1800 mm (72")			
V70-PP-HP	700 mm (27")	Polypropylene	Hastelloy	High Pressure
V100- PP-HP	1000 mm (39")			
V120-PP-HP	1200 mm (47")			
V150-PP-HP	1500 mm (60")			
V180-PP-HP	1800 mm (72")			

Max. Temperature	75 °F / 80 °C
Discharge Options	3/4" (22 mm) Hose Barb
	1" (25 mm) Hose Barb
	1 1 /4" (31 mm) Hose Barb
Max. Viscosity	1,000cps (HD-E)
	700cps (HD-A1)
	1,200cps (H D-A2)



Item No	Description		Part No
1	Pump Coupling		610-804
2	Hand Wheel		618-842
3	Snap Ring		615-808
4	Bearing Unit Assembled		610-838
5	V-seal (Viton)		640-800
6	Discharge Housing (PP)		660-828
7	O-Ring (PTFE)		621-895
8	Wing Nut (PP)		661-806
9	Hose Barb (PP)	3/4" (22 mm)	660-851
		1" (25 mm)	660-882
		1 1/4" (31.75 mm)	660-883
10	Shaft (Hastelloy)	700 mm (27")	615-843
		1000 mm (39")	615-844
		1200 mm (47")	615-845
		1500 mm (60")	615-846
		1800 mm (72")	615-847
11	Guide Sleeve (PTFE)	700 mm (27")	615-814
		1000 mm (39")	615-815
		1200 mm (47")	615-816
		1500 mm (60")	615-817
		1800 mm (72")	615-818
12	Inner Tube (PP)	700 mm (27")	666-800
		1000 mm (39")	666-801
		1200 mm (47")	666-802
		1500 mm (60")	666-815
		1800 mm (72")	666-816
13	Outer Tube (PP)	700 mm (27")	666-804
		1000 mm (39")	666-803
		1200 mm (47")	666-805
		1500 mm (60")	666-817
		1800 mm (72")	666-818
14	Pump Housing (PP)		665-824
15	Shaft Bushing (Rulon)		616-806-R
16	Impeller (PVDF)		646-808
	High Pressure Impeller (PVDF)		646-808HH
17	Pump Foot (PP)		666-809



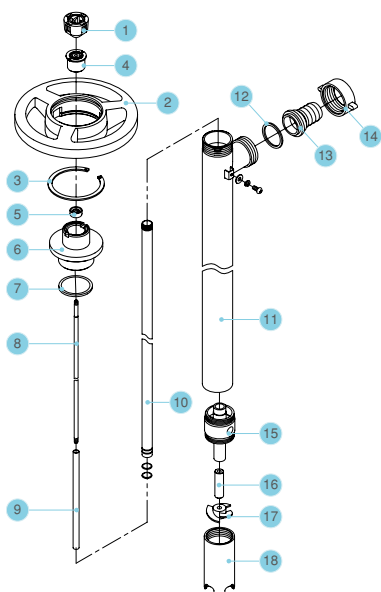
Carbon shaft bushing is available for request.

## 316 Stainless Steel Series

### V-SS Pump Series

Model	Length	Material	Shaft	Impeller
V70-SS	700 mm (27")	SUS 316	Stainless 316	High Volume
V100-SS	1000 mm (39")			
V120-SS	1200 mm (47")			
V150-SS	1500 mm (60")			
V180-SS	1800 mm (72")			
V70-SS - HP	700 mm (27")	SUS 316	Stainless 316	High Pressure
V100-SS - HP	1000 mm (39")			
V120-SS - HP	1200 mm (47")			
V150-SS - HP	1500 mm (60")			
V180-SS - HP	1800 mm (72")			

Max. Temperature	212 °F / 100 °C
Discharge Options	3/4" (22 mm) Hose Barb
	1" (25 mm) Hose Barb
	1 1/4" (31 mm) Hose Barb
Max. Viscosity	1,000cps (HD-E)
	700cps (HD-A1)
	1,200cps (HD-A2)



Item No	Description		Part No
1	Pump Coupling		610-804
2	Hand Wheel		618-842
3	Snap Ring		615-808
4	Bearing Unit Assembled		610-838
5	V-seal (Viton)		640-800
6	Connection Flange (SUS316)		620-800
7	Gasket (PTFE)		620-801
8	Shaft (SUS316)	700 mm (27")	620-827
		1000 mm (39")	620-828
		1200 mm (47")	620-829
		1500 mm (60")	627-809
		1800 mm (72")	627-810
9	Guide Sleeve (PTFE)	700 mm (27")	620-831
		1000 mm (39")	627-815
		1200 mm (47")	820-832
		1500 mm (60")	827-811
		1800 mm (72")	627-812

Item No	Description		Part No
10	Inner Tube (SUS316)	700 mm (27")	627-803
		1000 mm (39")	627-805
		1200 mm (47")	627-807
		1500 mm (60")	627-816
		1800 mm (72")	627-817
11	Outer Tube (SUS316)	700 mm (27")	627-800
		1000 mm (39")	627-801
		1200 mm (47")	627-802
		1500 mm (60")	627-813
		1800 mm (72")	827-814
12	O-Ring ( PTFE)		621-895

Item No	Description		Part No
13	Hose Barb (SUS316)	3/4" (19.05 mm)	621-897
		1" (25 mm)	621-896
		1 1/4" (31.75 mm)	621-898
14	Wing Nut (SUS316)		620-868
15	Pump Housing (SUS316)		627-804
16	Shaft Bushing (Rulon)		616-806-R
17	Impeller (PVDF)		627-806
	High Pressure Impeller (PVDF)		627-806HH
18	Pump Foot (SUS316)		627-808



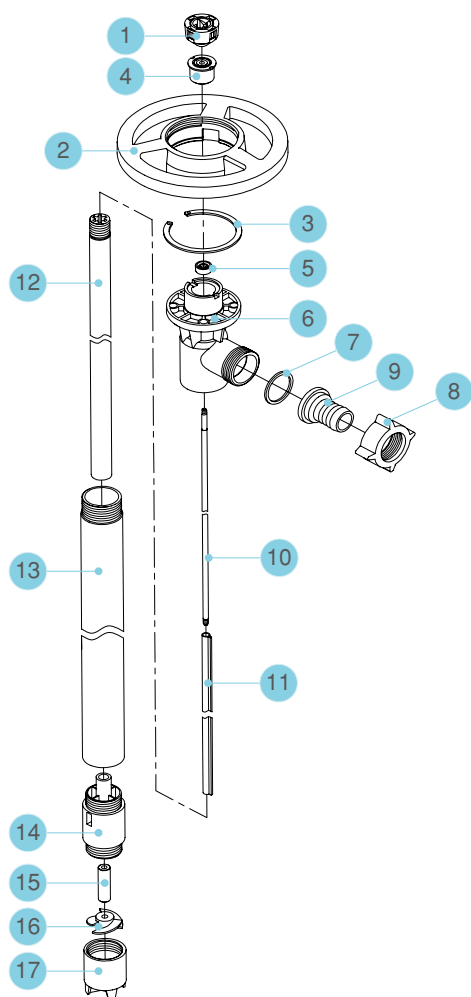
Carbon shaft bushing is available for request.

## PVDF Series

### V - PVDF Pump Series

Model	Length	Material	Shaft	Impeller
V70- PVDF	700 mm (27")	PVDF	Hastelloy	High Volume
V100 - PVDF	1000 mm (39")			
V120- PVDF	1200 mm (47")			
V150- PVDF	1500 mm (60")			
V180- PVDF	1800 mm (72")			
V70- PVDF - HP	700 mm (27")	PVDF	Hastelloy	High Pressure
V100-PVDF - HP	1000 mm (39")			
V120- PVDF - HP	1200 mm (47")			
V150-PVDF - HP	1500 mm (60")			
V180-SS- HP	1800 mm (72")			

Max. Temperature	212 °F / 100 °C
Discharge Options	3/4" (22 mm) Hose Barb
	1" (25 mm) Hose Barb
	1 1/4" (31.75 mm) Hose Barb
Max. Viscosity	1,000cps (HD-E)
	700cps (HD-A1)
	1,200cps (HD-A2)



Item No	Description		Part No
1	Pump Coupling		610-804
2	Hand Wheel		618-842
3	Snap Ring		615-808
4	Bearing Unit Assembled		610-838
5	V-seal (Viton)		640-800
6	Discharge Housing (PVDF)		640-728
7	O-Ring (PTFE)		621-895
8	Wing Nut (PVDF)		641-706
9	Hose Barb	3/4" (22 mm), PTFE	640-752
		1" (25 mm), PVDF	640-882
		1 1/4" (31.75 mm), PTFE	640-753
10	Shaft (Hastelloy)	700 mm (27")	615-843
		1000 mm (39")	615-844
		1200 mm (47")	615-845
		1500 mm (60")	615-846
		1800 mm (72")	615-847
11	Guide Sleeve (PTFE)	700 mm (27")	615-814
		1000 mm (39")	615-815
		1200 mm (47")	615-816
		1500 mm (60")	615-817
		1800 mm (72")	615-818
12	Inner Tube (PVDF)	700 mm (27")	646-800
		1000 mm (39")	646-801
		1200 mm (47")	646-802
		1500 mm (60")	646-811
		1800 mm (72")	646-812
13	Outer Tube (PVDF)	700 mm (27")	646-804
		1000 mm (39")	646-803
		1200 mm (47")	646-805
		1500 mm (60")	646-813
		1800 mm (72")	646-814
14	Pump Housing (PVDF)		646-807
15	Shaft Bushing (Rulon)		616-806-R
16	Impeller (PVDF)		646-808
	High Pressure Impeller (PVDF)		646-808HH
17	Pump Foot (PVDF)		646-809



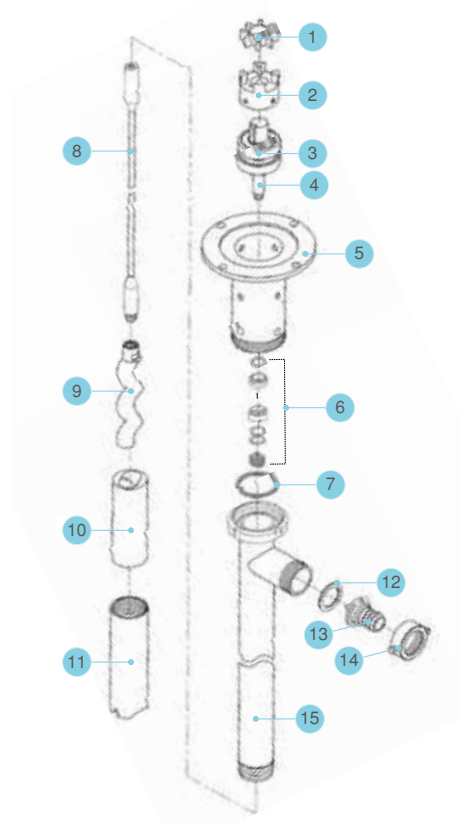
Carbon shaft bushing is available for request.

## High Viscosity Screw Series

### High Viscosity Screw Pump Series

Model	Length	Material	Mech. Seal	Stator	Rotor
V100 - SS - HV	1000 mm (39")	SUS 316	SIC	PTFE	SUS316

Max. Temperature	248 °F / 120 °C
Max. Pressure	10 bar
Discharge Options	1.08" (27.5 mm) Hose Barb Pressure
	1.3" (33 mm) Hose Barb
Max. Viscosity (Max. Air)	10,000cps (HD-A4)
	20,000cps (HD-A6)
	40,000cps (HD-A8)
	100,000cps (HD-A16)



Item No	Description		Part No
1	Coupling Insert		607-845
2	Motor / Pump Coupling		607-840
3	Bearing (2 required)		607-855
4	Bearing Shaft		607-850
5	Bearing Housing (SUS316)		607-854
6	Mechanical Seal, SIC		607-803
7	Gasket (PTFE)		607-838
8	Shaft (SUS316)	1000 mm (39")	607-805
9	Rotor (SUS316)		607-809
10	Stator (PTFE)		607-820
11	Stator Tube (SUS316)		607-875
12	O-Ring (PTFE)		607-830
13	Hose Barb	(SUS316)	
		1.08"(27.5 mm)	607-828
		1.3"(33 mm)	607-829
14	Wing Nut (SUS316)		607-827
15	Outer Tube	(SUS316)	
		1000 mm (39")	607-871

## Motor Series

### Electric Motor Series

#### V-E Variable Speed Control Motor Series

Model	Power
V - E1	110 V / 1 $\phi$ / 50-60 Hz / 485 W
V - E2	220 V / 1 $\phi$ / 50-60 Hz / 485 W

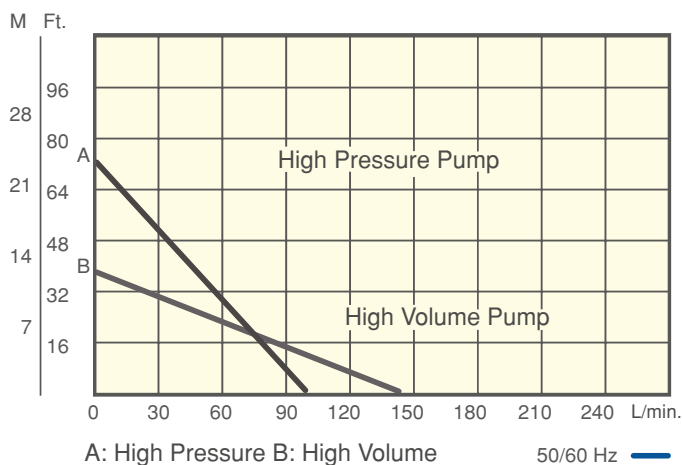
Max. Viscosity	1,000cps
Weight	4.2 kg (After package)
Max. RPM	20,000rpm (No-load)
Plug	USA, Euro, UK



Do not pump flammable or explosive fluids.



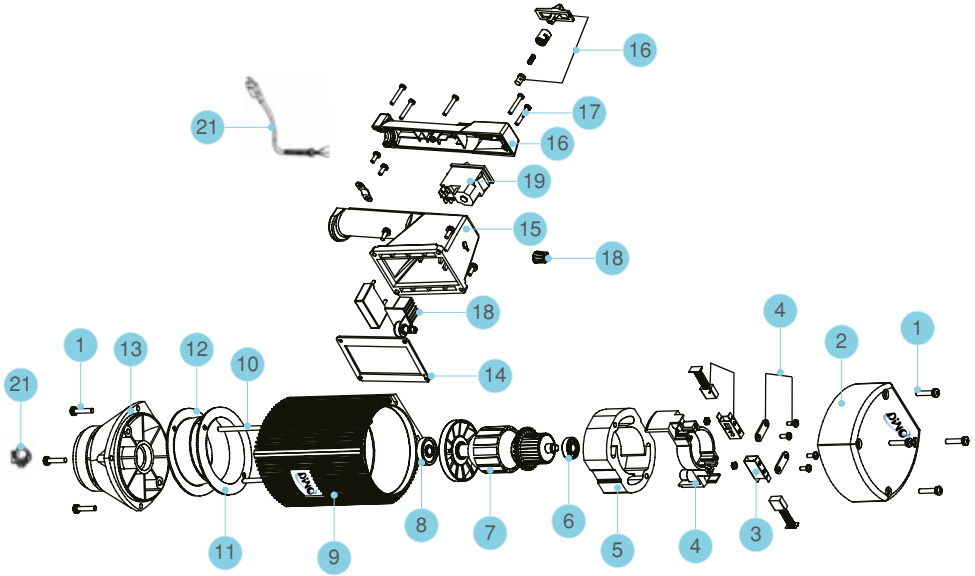
If the supply cord is damaged, it must be replaced by a special cord or assembly available from the manufacturer or Ekin Endüstriyel.



#### Test Conditions

- A: V100 - SS - HP / B: V100 - SS - HV
- Pump tested in 25 °C water, 500 lt container with 1" discharge
- Performance curves may vary  $\pm 10\%$  based on applications
- Max. head is obtained by closing outlet.





Item No	Description		Part No
1	Screw For Plastic Housing (8 Required)		681-830
2	Motor Cover		680-800
3	Carbon Brush 110 V / 220 V		685-809
4	Brush Holder		685-808
5	Stator	110 V	685-803
		220 V	687-802
6	Ball Bearing (609-2RU)		683-831
7	Armature	110 V	685-802
		220 V	687-801
8	Ball Bearing (6000-2RUP)		681-826
9	Motor Housing (Plastic)		685-810
10	Rod Connector		685-806
11	Gasket		685-804
12	Guide Disc		685-804-1

Item No	Description		Part No
13	Lower Housing		681-800
14	Gasket, Switch Housing		681-867
15	Switch Housing		680-801
16	Switch Cover With Pull Rod		680-802
17	Screw (5 Required)		682-820
18	Variable Speed Controller (Includes Knob)	110V	680-804
		220V	680-805
19	Overload Switch 110 / 220V		687-804
20	Power Wire Relief & Plug	USA	683-860
		Euro	683-860-EU
		UK	683-860-UK
21	Motor Coupling		683-833

## Air Motor Series

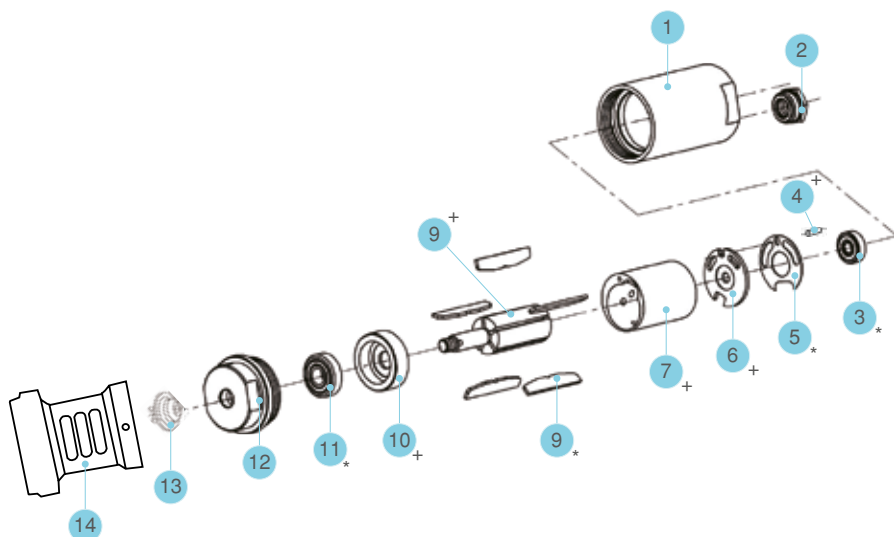
### V-H1 DRY Air Motor

Casing	Aluminum (Chromium)
Max. Inlet Air Pressure	87psi (6 Bar)
Air Consumption	0.55 Nm <sup>3</sup> /min@6 kg/cm <sup>2</sup>
Joint (Air)	1/4"
Accessory	Muffler / Air Regulator

Max. Viscosity	700cps
RPM	15,000 (5 Bar Air Pressure)
RPM	16,000 (6 Bar Air Pressure)
Horsepower	420 W (0.56HP)
Weight	1 kg (After Package)



Please install the air filter for reduce moisture from the compressed air supply.



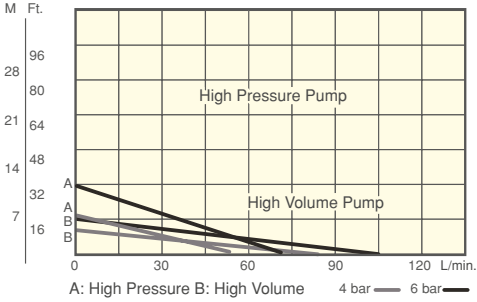
Item No	Description	Part No
1	Housing	101-201
2	Muffler	101-301
3 *	Ball Bearing	101-401
4 +	Pin	101-501
5 *	Gasket	101-601
6 +	Rear Plate	101-701
7 +	Cylinder	101-801

Item No	Description	Part No
8 *	Blade (5 required)	101-905
9 +	Rotor	101-100
10 +	End Plate	101-110
11 *	Ball Bearing	101-120
12	End Cap	101-130
13	Motor Coupling	683-833
14	Base	690-607



\* These parts are included in air repair kit 101.811 which may only be purchased as a kit.

+ These parts are included in rotor repair kit 101.812 which may only be purchased as a kit.



**Test Conditions**

- A: V100 - SS - HP / B: V100 - SS - HV
- Pump tested in 25 °C water, 500 lt container, with 1" discharge.
- Performance curves may vary  $\pm 10\%$  based on applications.
- Max. head is obtained by closing outlet.

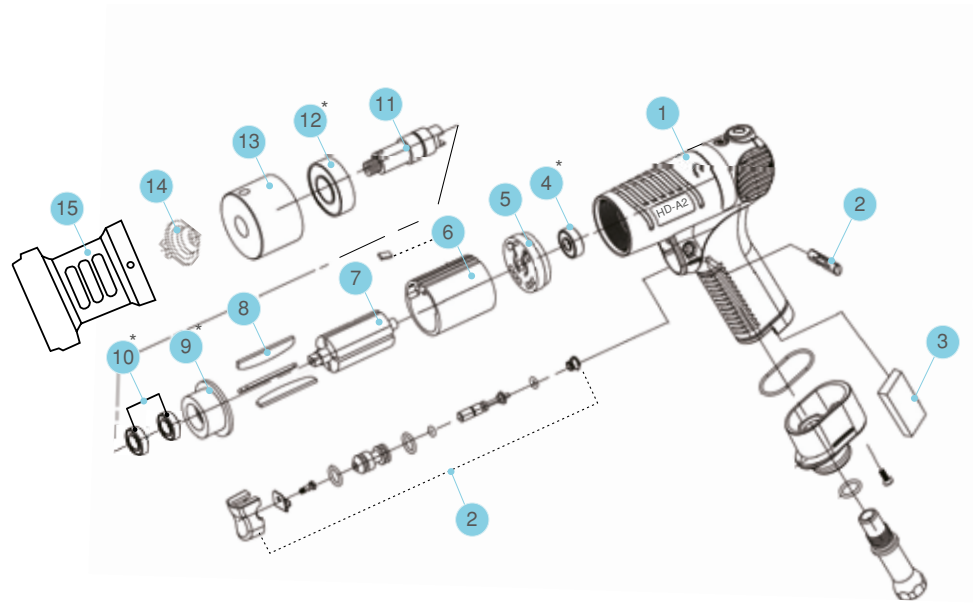
**V-H2 DRY Air Motor**

Casing	Aluminum (Epoxy)
Max. Inlet Air Pressure	87psi (6 Bar)
Air Consumption	0.55N m³/min@6 kg/cm²
Joint (Air)	1/4"
Max. Viscosity	1200cps

RPM	15,000 (5 Bar Air Pressure)
RPM	18,000 (6 Bar Air Pressure)
Horsepower	560w (0. 75HP)
Weight	1.2kg (After Package)



Please install the air filter for reduce moisture from the compressed air supply.



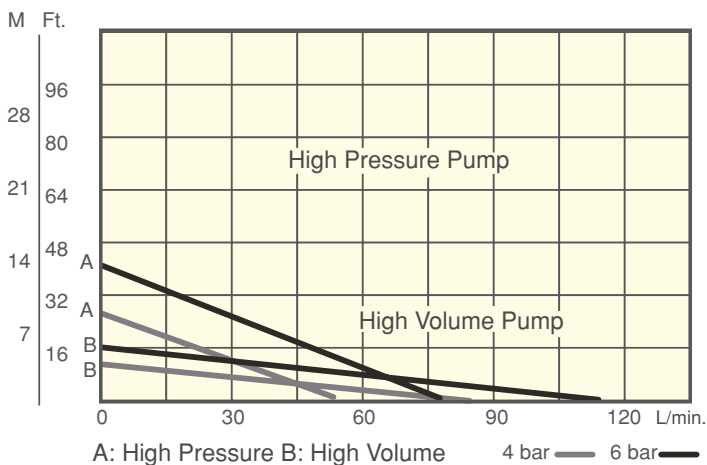


Item No	Description	Part No
1	Motor Housing	201-101
2	Trigger Assembly	202-216
3	Muffler	203-301
4 *	Ball Bearing	209-902
5	Front Plate	205-501
6	Stator	206-602
7	Rotor	207-701
8 *	Vane (6 Required)	211-113

Item No	Description	Part No
9	Rear Plate	209-901
10 *	Bearing (2 Required)	210-101
11	Shaft	212-121
12 *	Bearing	213-131
13	Front Housing	214-141
14	Motor Coupling	683-833
15	Base	690-607



\*These parts are included in air repair kit 201.821 which may only be purchased as a kit.



## Test Conditions

- A: V100 - SS - HP / B: V100 - SS - HV
- Pump tested in 25 °C water, 500 lt container with 1" discharge
- Performance curves may vary  $\pm 10\%$  based on applications
- Max. head is obtained by closing outlet.

## Optional Equipment

### Barrel Adaptor

Part No	Description	Material
690-800	D43xOD59.7mm	SUS316
690-801	ID43xOD59.7mm	PP



### Air Leaking Adaptor

Part No	Description	Material
690-801-A	ID43xOD59.7mm	PP+VT
690-800-A	ID43xOD59.7mm	SS+VT

### Wall Bracket

Part No	Description	Material
690-806		SUS316



### Transfer Hose

Part No	Description	Material
700-101	3/4" / 700 mm	PFA
700-102	1" / 1,000 mm	PFA
700-103	1" / 11,500 mm	PFA
700-104	1" / 2,000 mm	PFA
700-105	1" / 3,000 mm	PFA



### Strainer

Part No	Description	Material
690-802	3/4" / 700 mm	SUS316
690-803	1" / 1,000 mm	PVDF
690-804	1" / 11,500 mm	PP+GF



### Hanger

Part No	Description	Material
607-881		SUS304



### Ground Wire

Part No	Description	Material
690-815	Each 150 cm length with clip	

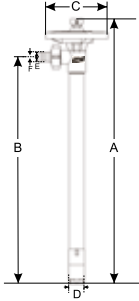


## Troubleshooting

Malfunction	Possible Causes	Troubleshooting
Electronic motor fail to run.	Overcurrent / Motor burned.	Check and repair or replace.
	Power short circuit or plug falls out.	Check and reconnect.
	Bearing unit abrasion.	Check and replace.
	Stator worn due to erosion.	Check and replace.
	Bad power connection.	Check and repair or replace.
	Switch.	Check and replace.
	Unstable current / Motor overload.	Plase install stabilizer or overload protector.
Pump suddenly stop in operating.	Electronic motor overheated.	Turn off the power and restart in 20 minutes.
	Fluid too viscous.	Check the viscosity for suitable pump.
	Pump clogged.	Check and remove blockage; install or change strainer.
	Air motor became slowly or stop.	Check the air supplier.
Pump rupture or deformed.	Liquid temperature too high.	Check temperature with suitable material and replace.
	Suction / Discharge line not properly stable and vibration.	Make the suction / discharge stability or replace.
In normal operating, but the flow rate is small in pumping.	Tube clogged.	Check and remove blockage from the bottom of tube; install or change strainer.
	Air pressure too low.	Check air supplier and regulator.
	Impeller damage or abrasion.	Check and replace.
	Connection not security tighten or damaged.	Check and repair or replace.
	Liquid should higher than pump foot 2 cm.	Check and replace drum.
	Vane of air motor abrasion.	Check and replace.
Excessive noise or vibration.	Connections not security tighten.	Check and repair.
	Motor / Pump coupling abrasion or damage.	Check and replace.
	Bearing unit abrasion.	Replace.
	Shaft / Guide sleeve abrasion.	Replace.
	Suction / Discharge line not properly stable and vibration.	Make the suction / discharge stability or replace.
	Shaft bushing abrasion.	Replace.
Fluid leaking.	Connections not security tighten.	Check and repair.
	Discharge leaking.	Check discharge O-ring and replace.
	Oil seal, shaft, bearing unit abrasion.	Replace.
Air motor fail.	No air supply.	Check and turn on the air regulator from low to high until request.
	Air pressure too low.	Check the air regulator.
	Overload cause vane damage.	Check and replace.
	Long operation cause vane abrasion.	Check and replace.

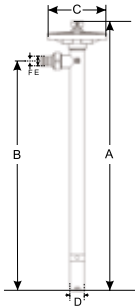
## Dimensions Drawing

### PPHT/ PVDF Tube



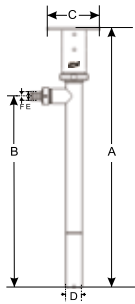
Length	A	B	C	D	E	F
mm	mm	mm	mm	mm	mm	mm
700	810	700	170	41	19	27
1000	1100	1000	170	41	19	27
1200	1290	1200	170	41	19	27
1500	1590	1500	170	41	19	27
1800	1890	1800	170	41	19	27

### SS Tube



Length	A	B	C	D	E	F
mm	mm	mm	mm	mm	mm	mm
700	810	700	170	42	20	27
1000	1100	1000	170	42	20	27
1200	1300	1200	170	42	20	27
1500	1600	1500	170	42	20	27
1800	1900	1800	170	42	20	27

### High Viscosity Tube



Length	A	B	C	D	E	F
mm	mm	mm	mm	mm	mm	mm
700	1300	1025	1066	56	28	33



Dimensions may vary  $\pm 10\%$  based on product. Please contact us if need more information. +90 216 **444 35 46** (EKİN)

## General Terms Of Use and Important Warnings

- Our products are guaranteed for 2 years against material and manufacturing defects. The warranty period starts with the delivery of the product to the user. Consumables and parts worn out in normal use (Gasket, shaft seal, stator, rotor, diaphragm, membrane, resistor, springs, electrical circuit elements, etc.) are not covered by the warranty. Warranty conditions are void if the product is used outside of the specified operating conditions.
- Failures caused by the product's installation, commissioning and use contrary to the items in the user's manual are not covered by the warranty. Ekin Industrial sends the user manuals with the product. It also publishes it on its website. In cases where the user manual does not reach the Buyer, the product should not be commissioned and must be requested in writing from Ekin Industrial. Otherwise, it is accepted that you are aware of the installation, maintenance and usage conditions, that you have this competence and that you have taken responsibility for all problems that may arise, and Ekin Industrial is not responsible for any problems that may arise.
- Periodic maintenance and repairs should be done using original parts supplied by Ekin Industrial or authorized services. Otherwise, the Warranty Terms are void.
- When procuring the product, the type of the product, the type of fluid used, pressure, temperature, density, etc. All information must be given completely and accurately. Otherwise, our company is not responsible for the problems that may occur.
- Problems, blockages and contaminations caused by the quality of the fluid used in our products or the installation are not covered by the warranty. Damages that may occur as a result of corrosion, cavitation, vibration, water hammer and freezing are not covered by the warranty.
- The reason for the damages that may occur due to the absence or malfunction of the armatures in the system or the non-use of the safety armatures (safety valve, thermostat, pressure sensor, temperature sensor, etc.) cannot be determined later and is not covered by the insurance. Our company is not responsible for material and moral accidents and losses that may occur.
- Any products and accessories that we trade or use in our products that are not our own production are not under the guarantee of Ekin Industrial. The warranty of these products and the responsibility of the damages that may occur are under the commitment of the manufacturers of the products.
- Our company is not responsible for process, production or real estate losses that may arise from our products. Claims for compensation will not be accepted unless the damage caused by us is the result of willful or gross negligence. The compensation amount for the damages that may occur, the delay penalty or any penalty that may arise for any reason cannot exceed the invoice amount.
- After receiving the products, the buyer; For obvious defects, the period of direct or indirect control, inspection and notification is 2 business days, for hidden defects, the period of direct or indirect control, inspection and notification is 8 business days. Products that are not notified in writing by the buyer within this period are deemed to have been accepted..
- Except for assembly and usage errors, we have the right and obligation to improve in the event of a manufacturer's defect and the product's lack of guaranteed features. We also have the right to choose to replace the product with a new one. However, the buyer has no right to demand a new one. In case of no improvement, repair or new delivery, the buyer may request the termination of the contract or a refund of the product price.
- The system designer and user are responsible for the selection of the appropriate product, its suitability for specific applications, its safe and trouble-free installation, operation and maintenance. Otherwise, we are not responsible for any damage or work accidents that may occur.
- Our company is only responsible for making the products to be delivered carefully ready for shipment. Since our company does not provide engineering services, product selection should be made after the application details, suitability of the material to the system and product features are technically evaluated by the buyer. Improper selection, installation or misuse of products may result in property damage or injury. Our company does not accept responsibility for product selection.
- If the buyer is a merchant or public law legal entity, all legal disputes will be resolved by the court over which we have jurisdiction. Anadolu Adliyesi / Turkey is exclusively authorized and competent authority in all disputes arising from joint legal relations. In case of dispute, Istanbul Anatolian courthouse courts and enforcement offices are authorized.





# CERTIFICATE OF WARRANTY

## The Document's Confirmation Date and Number:

The usage of this document has been authorized by T. C. Sanayi Bakanlığı İl Müdürlüğü in accordance with the Law No. 4077 on the Protection of Consumers and the Communiqué on the Implementation of the Guarantee Certificate put into effect based on this Law.

## WARRANTY CONDITIONS

1. Warranty period starts from the delivery date of the goods.
2. In case of malfunction of the products within the warranty period, the time spent in the repair is added to the warranty period. The repair period of the goods is maximum 30 working days. This period starts from the date of notification to the service station of the defect goods. In the absence of service station, this period starts from the date of notification to the seller, dealer, agent, representative, importer or manufacturer of the goods.
3. In case of malfunction of the goods within the warranty period due to material, workmanship or assembly defects, the goods will be repaired at no cost and no additional cost will be asked from buyer under the name of changed part price or any other name.
4. Defects caused by the use of the product contrary to the items in the user manual are out of the warranty.
5. For the problems that may arise regarding the Warranty Certificate can be applied to the Sanayi ve Ticaret Bakanlığı Tüketicinin ve Rekabetin Korunması Genel Müdürlüğü.
6. The manufacturer may request that the product be sent to its own production facility at its own discretion. The shipping cost to be spent by the customer belongs to the manufacturer; if it is evaluated within the scope of warranty as a result of the examination made on the product, if the defect is not evaluated under the warranty, all costs incurred will be invoiced to the customer.
7. The manufacturer is not responsible for any damages and losses that may occur in the cargo or warehouse during the shipment of the product.
8. The manufacturer accepts no liability for the damage caused by the following reasons:
  - Failure to comply with temperature, pressure or other conditions specified in the technical specifications.
  - Incorrect applications and normal abrasion conditions.
  - Damages that may occur from sudden opening and closing of the fluid valves.
  - Damages caused by the usage of non-original spare parts.
  - Damages that may occur during shipping.
  - Damages that may arise from corrosion.
  - Blockages caused by the fluid passed through inside the product.
  - Damages that may arise from condensate discharge in products which are used in steam applications.
  - Damages that may occur by the blockages caused by the solid materials which can block the products.
  - Damages that may occur as a result of incorrect interventions by the un-authorized services.
  - Damages that may be caused by the lack of fixtures or not working properly.
  - Accidents and problems that may occur in the system if the safety fixtures (safety valve, thermostat, pressure sensors, temperature sensors etc.) are not used are not considered under warranty. The manufacturer is not responsible for any of the pecuniary and non-pecuniary damages that may occur.
9. Manufacturer is not responsible for secondary damages, loss of production and accidents whether it is under warranty or not.
10. All of the above items have been specified in our offer and order confirmations and you have been informed that they supersede the contract. Commissioning of the product means acceptance of the contract.

For the product that was sold to ..... LTD. STİ./A. Ş / Legal Entity on ...../20... with stated model, brand and serial number, all kinds of manufacturing and material defects are covered by the warranty of our company for 2 (two) years.

**SELLER****DEALER****END USER**

Brand : \_\_\_\_\_

Product Type : \_\_\_\_\_

Product Code : \_\_\_\_\_

Serial No : \_\_\_\_\_

Product No : \_\_\_\_\_

Please keep this certificate!

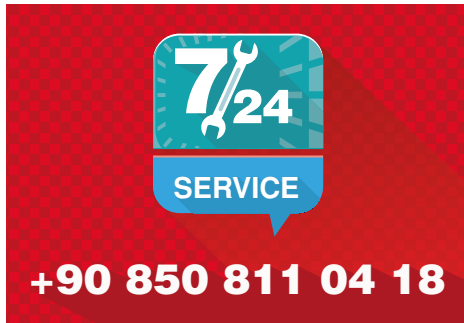
## Professional System Solution Center

You can get answers to the problems you experience with your pumps, heat exchangers and system from our MIT professional system solution center. You can also benefit from our 7/24 uninterrupted service with our solution center consisting of our expert engineers.

- Domestic hot water installations.
- Central and district heating systems.
- Milk, yogurt, heating, cooling and pasteurization systems.
- Industrial cooling and heating systems.
- Oil cooling systems.
- Energy recovery systems.
- Pool heating systems.
- Steam installations.




It is vital for your system to be designed and implemented correctly in the first installation in order to be able to operate at the desired capacity, smoothness and long life. For this reason, you can get first-hand the technical support you need during the installation phase of your system and the problems that may arise in the business; You can reach us **24 hours +90 (216) 232 24 12 in 7 days.**



We would like to reiterate that we will be happy to share our knowledge accumulated over many years with our valued customers in order for your system to work correctly and performance.

Ekin will continue to be the best solution partner for you in all applications with all kinds of heating and cooling applications.

 Producer; reserves the right to change the product features, technical dimensions and information and installation diagrams specified in this catalog without notice. No specified information can be copied and used without the permission of the manufacturer. In no way can the manufacturer be held responsible by giving examples of technical information and diagrams. In case of need, we request you to request a special technical drawing for your project for exact dimensions.



Today; **135 points** in the world.





Dudullu Organize Sanayi Bölgesi - Des Sanayi Sitesi  
107. Sk. B:14 Blok No: 2 Ümraniye / İstanbul / Türkiye  
**Phone:** +90 216 232 24 12 **Fax:** +90 216 660 13 08  
[info@ekinendustriyel.com](mailto:info@ekinendustriyel.com) - [www.ekinendustriyel.com](http://www.ekinendustriyel.com)

+90 216  
**444** EKİN  
3 5 4 6

